

Group 1 Fleet

GROUP 1

The right vehicles, at the right time, for the right cost



JAGUAR

KIA



LEXUS



PORSCHE

SEAT

SKODA



Toyota
Professional



Choice is the ultimate luxury.

From compact hatchbacks, to executive saloons, large SUVs, and everything in between, your fleet has unprecedented options from the most renowned brands on our roads. It's not just passenger cars either, as we offer the very best commercial vehicles that have kept British businesses moving for decades.



JAGUAR



PORSCHE



SKODA



Welcome to Group 1 Fleet

With an expansive and diverse portfolio of brands, we've got the right car for your business. Whether it's a single-car supply, or a comprehensive fleet renewal, our wide range of passenger and commercial vehicles are sure to be the perfect fit for every use case.

Why choose Group 1 Fleet?

Business is a relationship built on trust. That's why we strive to ensure that our customers receive the very best levels of service, a personalised communication plan, service level agreement based on your individual business requirements, and a dedicated and supportive partner.

Independent, strategic fleet advice is vital to your business, and we understand that.

Our recommendations on funding are truly independent based on your specific circumstances and needs, whether it's a Business Contract Hire, or an Outright Purchase, or another Business Lease type. Working directly with all major leasing companies, our recommendations are unbiased, and precisely tailored to suit your business.

What we can offer your business.

Impartial consultancy.

Our experienced team are on hand to review your fleet policy, working with the demands of your business to ensure you get the right vehicles, introductions to funding partners and manufacturer discounts.

Vehicle Maintenance.

With our expansive dealership network, servicing and maintenance using OEM parts and processes will keep your fleet in the very best condition. Plus, complimentary Vehicle Health Checks will ensure your drivers are safe on the road.

Account Management

Our dedicated team will manage your account to provide the very best customer experience for you and your business. We work with you to ensure that the needs of your fleet, and each of your drivers are met and exceeded.

Nationwide Coverage

With 195 locations across England and Wales, our dealership network is perfectly positioned to support the routine maintenance and repair requirements for your fleet.

Lessor Relations

We work with major FN50 vehicle lessors, with access to a broad portfolio of passenger cars, SUVs, and commercial vehicles from a wide and desirable range of manufacturers.

Cost optimisation

We'll take you through the funding options available, and understand your use cases to recommend the best route to renewing your fleet in a cost-effective manner.

Nominate Group 1 Fleet as your trusted supplier.

Thanks to our close relationships with leading manufacturers, we can introduce you to your desired brand, and get bespoke terms for your business. We will support you through every stage, from initial consultations, to selecting the right vehicles, optimising your cost base, keeping your fleet in the best running order, and future renewals as part of a long-term supply relationship. Drive your business forwards, together with Group 1 Fleet.

The right vehicles, the right funding.

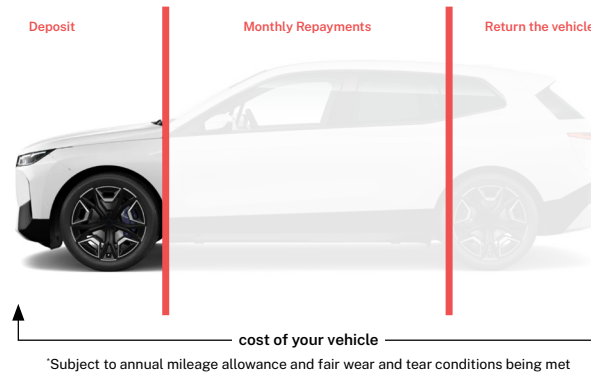
The right vehicle for your business is waiting for you at Group 1 Fleet. Explore the range of funding options to find the right fit for your business.

Outright Purchase



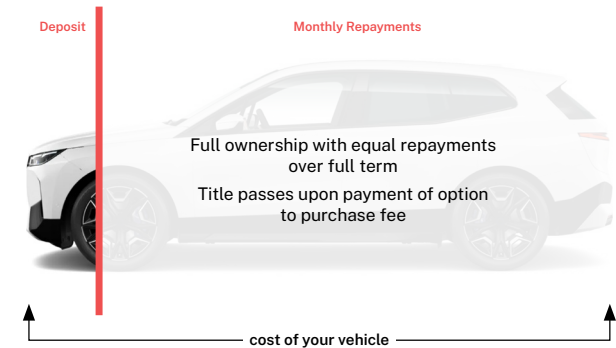
Own the vehicle from day one. This gives your business complete control over the vehicle, with no usage, mileage, or term limits. Your business can choose when to sell the vehicle, and recover some of the investment in the future.

Business Contract Hire



Choose the timeframe, and the mileage. VED is included, and a maintenance package can be added. Fixed monthly rentals ex-VAT are based on the agreed term and mileage. Return the vehicle at the end of the agreement with no depreciation risk.

Hire Purchase (HP)



Pay a deposit, and choose the term to pay the entire value of the vehicle with no annual mileage limits. You will own the vehicle at the end of the agreement.

Cost-efficient, fuel-efficient, energy-efficient.

Electrified vehicles can not only reduce running costs, but also reduce the tax burden for your business. Whether you need a fully-electric or pure-combustion powered vehicle, or the best of both worlds with a plug-in hybrid, there has never been a more efficient product portfolio offered by Group 1 Fleet. Take advantage of reduced Benefit-in-Kind rates for electrified vehicles, with electric vehicles attracting only a 3% BiK rate for 2025/26.




C02 (g/km)	Electric Range (Miles)	2025/26 (%)	2026/27	2027/28	2028/29	2029/30
0		3	4	5	7	9
1-50	>130	3	4	5	18	19
1-50	70-129	6	7	8	18	19
1-50	40-69	9	10	11	18	19
1-50	30-69	13	14	15	18	19
1-50	<30	15	16	17	18	19
51-54		16	17	18	19	20
55-59		17	18	19	20	21
60-64		18	19	20	21	22
65-69		19	20	21	22	23
70-74		20	21	21	22	23
75-79		21	21	21	22	23
80-84		22	22	22	23	24
85-89		23	23	23	24	25
90-94		24	24	24	25	26
95-99		25	25	25	26	27
100-104		26	26	26	27	28
105-109		27	27	27	28	29
110-114		28	28	28	29	30
115-119		29	29	29	30	31
120-124		30	30	30	31	32
125-129		31	31	31	32	33
130-134		32	32	32	33	34
135-139		33	33	33	34	35
140-144		34	34	34	35	36
145-149		35	35	35	36	37
150-154		36	36	36	37	38
155-159		37	37	37	38	39
160-164		37	37	37	38	39
165-169		37	37	37	38	39
170+		37	37	37	38	39

Source: UK Government

Local service, nationwide.

With 195 locations nationwide, there's a Group 1 Store and Service Centre near you, your business, and your drivers.



Meet the team:



Sarah Carlton

Midlands and South

sarah.carlton@group1auto.co.uk

I live in the Cotswolds and work as an Account Manager, supporting businesses with their vehicle and fleet needs. I'm passionate about building genuine relationships and making things as easy and efficient as possible for my clients. Whether it's finding the right solution or simply being on hand when needed, I'm here to help every step of the way.

Outside of work, I'm a big fan of horse racing and cars, and I enjoy travelling especially when it involves discovering new places and great food. I also love getting out for countryside walks with my dog, Rolo.



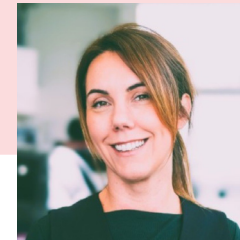
Adele Weston

North

adele.weston@group1auto.co.uk

My role here at Group 1 is to be your main point of contact for all of your fleet vehicle requirements, across all of our fantastic brand partners. I have been in this role for the last 10 years and enjoy building relationships and working closely with my customers and ensuring that they are continuously supported throughout their whole new vehicle experience.

I live in Manchester and outside of work I enjoy watching the football and spending time with my family.



Kerry Barber

South East and Anglia

kerry.barber@group1auto.co.uk

I have over 20 years of experience in the Fleet industry. I specialise in account management and high-value partnerships that drive business growth and deliver smarter, more sustainable vehicle strategies.

My real passion is being a certified carbon literate; I can bring a sustainability lens to every conversation helping clients align fleet decision with their ESG goals and broader future mobility strategies.

Outside of work I enjoy reading non-fiction, exploring new cuisines (I love a curry!) and I am a mum to an energetic 7 year old boy.

I look forward to working with you.

The road ahead, together.

We're ready to assist with enhancing, expanding, or evolving your fleet, and providing a personalised service from start to finish. Our choice of vehicles, convenient locations, relationships with all major lessors, and our expert impartial advice makes Group 1 Fleet the right choice for your business.

Get in touch with us to learn more.

GROUP **1**

Fleet@group1auto.co.uk



JAGUAR



LEXUS



PORSCHE



SKODA



Toyota
Professional

